

DATE: JUNE 16, 2025

COMMUNITY ENGAGEMENT REPORT

# Hazelwood Green Field



Prepared for:

Richard King Mellon Foundation  
Tishman Speyer  
The Pittsburgh Steelers

Prepared by:



**LBA** LANDSCAPE ARCHITECTURE

# Table of Contents

## SECTION A: INTRODUCTION

About This Report	4
About Hazelwood Green	4
About the Hazelwood Green Field	6

## SECTION B: HOW WE GOT FEEDBACK

Modes of Outreach	9
Engagement Strategies	10
Listening Session Sequence	12

## SECTION C: WHAT WE HEARD

Listening Session #1	14
Listening Session #2 (Youth)	16
Listening Session #3	18
Listening Session #4 (Virtual)	20
Listening Session #5 (Youth)	22

## SECTION D: COMMON TOPICS

Organizing What We Heard	24
Evaluating What We Heard	24
What People Want to See	26
What People Want to See & Where It Can Occur	28

## SECTION E: NEXT STEPS

Project Timeline	30
------------------	----

## APPENDIX



# Introduction

## About This Report

This report summarizes community engagement activities for the Hazelwood Green Field to be built within Hazelwood Green. This report will inform the designers of the Hazelwood Green Field, the adjacent green spaces, and nearby parks by describing the various ideas and topics discussed with Hazelwood community members.

This project reflects the community priorities in the Greater Hazelwood Neighborhood Plan by promoting physical activity, providing opportunities to foster community, and helping to address some of the prevalent chronic health conditions in Hazelwood.

## About Hazelwood Green

### WHO IS INVOLVED

Almono Limited Partnership (Almono LP) is the primary landowner of 165 acres of the total 178 acres that comprise Hazelwood Green. Three foundations comprise Almono LP: the Claude Worthington Benedum Foundation, the Richard King Mellon Foundation, and the Heinz Endowments. Almono LP is working with master developer Tishman Speyer to transition the brownfield site into a mixed-use development.



*Image Courtesy of Greater Hazelwood Neighborhood Plan*

*Rendering of Hazelwood Green Master Plan from the 2022 Preliminary Land Development Plan; Graphic Courtesy of Almono LP*

### THE VISION

Hazelwood Green is rebuilding Pittsburgh's riverfront as a beacon of innovation, creativity, and wellbeing—in ways that align with Pittsburgh and the surrounding communities. Here, people thrive, ideas take flight, and a historic industrial brownfield site is transforming into a sustainable, equitable, and inclusive new model for urban development.



*Illustrative Rendering of Hazelwood Green; Graphic Courtesy of Tishman Speyer*

### THE PLAN

Hazelwood Green is situated along the Monongahela River adjacent to the Hot Metal Bridge and is a part of Pittsburgh's Greater Hazelwood neighborhood. This vibrant hub is the site of the former LTV Steel Mill and sits at the intersection of the nearby Southside Flats, Pittsburgh Technology Center, South Oakland, and Greenfield with community events and programming, an abundance of green spaces, and miles of publicly accessible bike trails. It serves as a new model of community-focused economic development with affordable housing, community recreation and a site-wide commitment to sustainability.

Hazelwood Green is the emerging home to Pittsburgh's most advanced and promising industries. In addition to redeveloping historic industrial structures—the former LTV mill and roundhouse—the site includes research and workspaces for Carnegie Mellon University and the University of Pittsburgh. Already operating in the Mill 19 building, Carnegie Mellon University is constructing its new Robotics Innovation Center at Hazelwood Green. The University of Pittsburgh has recently completed the BioForge at Hazelwood Green, a sophisticated biomanufacturing center.

At full build-out, the site is anticipated to comprise 4.3 million square feet of nonresidential development (e.g. office, retail, community uses) and 3.6 million square feet of residential development. The plan for Hazelwood Green is to create a healthy balance of uses at the site, including housing and jobs.



*Illustrative Rendering of Hazelwood Green; Graphic Courtesy of Tishman Speyer*



*Summer Programming at the Plaza; Image Courtesy of Tishman Speyer*



*Green Space at Hazelwood Green; Image Courtesy of Tishman Speyer*



# About the Hazelwood Green Field

## WHO IS INVOLVED

The field will be a new, multi-purpose field and youth sports complex that supports the region’s youth through active recreation, skills-building, and wellness. Tishman Speyer, the master developer of Hazelwood Green, will develop the youth sports and recreation complex. The project is a joint effort by the Richard King Mellon Foundation, Tishman Speyer, and the Pittsburgh Steelers. The Richard King Mellon Foundation has awarded a \$10 million grant to Steelers Charities to fund the construction of the Hazelwood Green Field.



Site Use Opportunities; Images Courtesy of POPULOUS

## THE VISION

The new Hazelwood Green Field is centered on a shared belief in the importance of sports and recreation in youth development and a shared commitment to ensure that such opportunities are available to all. The project is intended to address a well-documented shortage of youth-centric sports and recreation destinations in Pittsburgh. The vision for this field reflects Hazelwood’s plan to provide amenities that can help to build community and address chronic health conditions that are also prevalent in the neighborhood.

## THE PLAN

The field will be located within Hazelwood Green where it is most easily accessible to the community. It will serve youth from Hazelwood and across the Pittsburgh region.

The facility will be utilized year-round for sports and community organization activities, emphasizing health, resilience, and leadership development. The field will also support coaches and offer certification opportunities, ultimately encouraging stronger and healthier players, teams, and communities. Activities will include youth football, clinics, boys and girls flag football, and more. As it grows, the field will also include open areas for temporary concessions such as food trucks and local vendors.



Context Plan; Image Courtesy of Tishman Speyer



View of the Site Looking North



View of the Site Looking Northwest

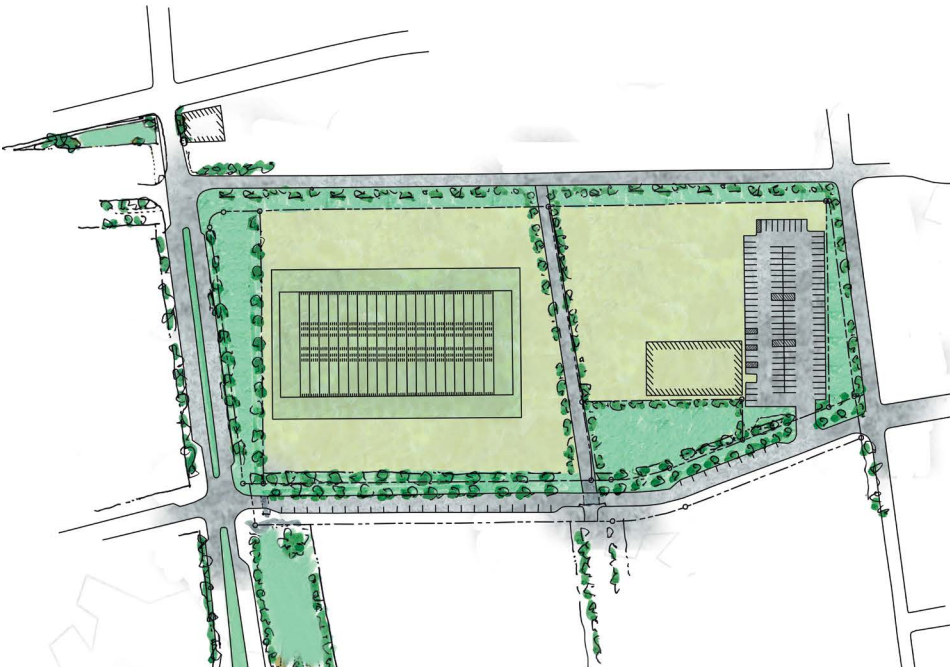


SCOPE OF THE PROJECT

The development team envisioned working with the Hazelwood community to determine appropriate uses for the field, which led to the series of community engagement sessions documented in this report. The scope of the project and thus the scope of the Hazelwood community discussions included:

- ▶ The multi-sport turf field
- ▶ The adjacent open space surrounding the field
- ▶ The existing garage, which may or may not be used in the first phase of the project
- ▶ The park space

These facilities and areas were discussed collectively during the community engagement sessions, and no topics or suggestions were off-limits.



The final layout will be created by design professionals who will work within the Hazelwood Green Master Plan authored by ALMONO and be governed by land development requirements of the City of Pittsburgh.

How We Got Feedback

Modes of Outreach

In an effort to reach Hazelwood community members to inform them about the project and the corresponding listening sessions, several modes of outreach were used. Postcards with the meeting information were distributed digitally and in-person in the following ways:

- ▶ Post cards were dropped off at local businesses, the library, and schools in Hazelwood.
- ▶ Post cards were distributed at the PIT Kaleidoscope event.
- ▶ The Hazelwood Initiative, the Greater Hazelwood Community Collaboration (which convenes dozens of Hazelwood non-profits), Poor Law, and the Hazelwood Cobras Youth Football Team distributed post cards to their members.
- ▶ These same organizations also shared the information on their social media accounts.
- ▶ The Steelers attended the Hazelwood Initiative and the Greater Hazelwood Community Collaboration meetings a month in advance to announce the meetings.

In an effort to meet members of the Hazelwood community where they are:

- ▶ A shuttle service with two stops was provided for the listening session that occurred outside the Hazelwood neighborhood.
- ▶ A workshop was hosted at the Hazelwood Cobras Youth Football Team after school program during normal programming hours.
- ▶ A variety of listening sessions times, locations, and modes were offered: day time, evening, weekend, and virtual sessions.

Please join us for one of our  
**Community Listening Workshops**  
about Steelers Field at Hazelwood Green

The Pittsburgh Steelers invite you to share your ideas about programming for the *Steelers Field at Hazelwood Green*. We will be hosting multiple collaborative workshops to hear about your community's needs around sports and wellness. Your feedback will inform the design and operations of this new community athletic facility over the coming months.

<p><b>General Session #1</b> Wednesday Evening March 6, 2024 5:30 Refreshments 6:00pm-7:30pm</p> <p><b>The Spartan Center</b> 134 East Elizabeth St Pittsburgh, PA 15207</p>	<p><b>Youth Session</b> Saturday Morning March 9, 2024 10:00am-12:00pm Refreshments provided</p> <p>Steelers' Training Complex <b>* Free Shuttle Provided *</b></p> <p><b>SIGN UP HERE:</b></p> <p><small>SteelersWaiver@TishmanSpeyer.com</small></p>	<p><b>General Session #2</b> Saturday Afternoon March 9, 2024 2:00pm-3:30pm Refreshments provided</p> <p><b>The Spartan Center</b> 134 East Elizabeth St Pittsburgh, PA 15207</p>	<p><b>General Session #3</b> Thursday Evening March 14, 2024 6:00pm-7:30pm</p> <p><b>Zoom-Only Session</b></p> <p><small>us02web.zoom.us/j/6397431211</small></p>
--	--	---	---

The above postcard was distributed to Hazelwood community members both digitally and in-



# Engagement Strategies

## LISTENING SESSIONS

To solicit feedback and ideas related to the Hazelwood Green Field, Tishman Speyer and the Steelers conducted five “listening” sessions at different times, locations and venues to give as many people as possible the opportunity to participate. Two sessions were held at the Spartan Center in Hazelwood, one session catered to Hazelwood’s youth was held at the Steelers training facility on the Southside, one was held virtually via ZOOM, and a final session was held at Burgwin Park with the Hazelwood Cobra’s Football Team. Each listening session had a similar format. First, there was a brief introduction by Tishman Speyer and the Steelers to explain the purpose of the session and provide some background on the Hazelwood Green Field and Hazelwood Green. Afterward, the session was divided into smaller groups for table discussions. Inspirational precedent images were presented to spur discussion and spark new ideas.

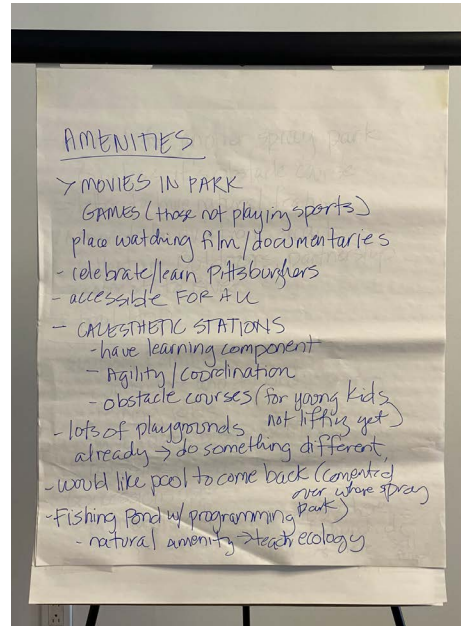
## TABLE DISCUSSIONS

The intention of the table discussions was to give participants a smaller venue to share their thoughts. Hazelwood community members discussed ideas, suggestions, and concerns during the table discussions. Each table was facilitated by a few design team members, who jump-started the conversation by asking the group open-ended questions. Key questions asked included:

- ▶ What programs do you want to see?
- ▶ How would you like the field to be used?
- ▶ Would you attend other types of events here?
- ▶ Would you attend other types of events here?



Table Discussions



Note Taking

## INSPIRATIONAL PRECEDENT IMAGES

Another technique utilized during the table discussions was the display of inspirational precedent photographs. These photos showed potential programs and features for the multi-sport turf field and adjacent open space and park space. Participants at each table placed dot stickers on the pictures representing the uses and activities that resonated most with them. These images also sparked new ideas from community members by providing a visual benchmark for the types of features and activities participants would like to see within or around the field.

All comments and ideas shared during the table discussions were written on large note tablets and documented with photographs. Individuals also had the option to write their thoughts down on paper if they were not comfortable sharing them with their group. Participants were given a handout with questions.



These images, and many more, were shown at each listening session to spur discussion and provide inspiration.



## LISTENING SESSIONS SEQUENCE



34 ATTENDEES

## LISTENING SESSION #1

3/6/2024

The Spartan Community Center of Hazelwood  
6:00 PM - 7:30 PM



## LISTENING SESSION #2 (YOUTH)

3/9/2024

UPMC Rooney Sports Complex  
10:00 AM - 12:00 PM



## LISTENING SESSION #4 (VIRTUAL)

3/14/2024

Virtual (Zoom)  
6:00 PM - 7:30 PM



## LISTENING SESSION #3

3/9/2024

The Spartan Community Center of  
Hazelwood  
2:00 PM - 3:30 PM



## LISTENING SESSION #5 (YOUTH)

3/15/2024

Burgwin Park  
5:00 PM - 6:30 PM



# Listening Session #1



Program or Feature	Count
Soccer	18
Football	16
Cheerleading	12
Field Hockey	3
Lacrosse	2



Program or Feature	Count
Strength & Agility Training	14
Wellness Programs	12
Youth Broadcasting	11
CPR Training	9
First Aid Training	8
Green Space for Tournament Setup	5
Hardscape & Infrastructure for Tournaments & Temporary Events	1



Program or Feature	Count
Volleyball	34
Food Trucks	23
Playground	18
Adult Exercise	16
Markets	13
Farmers Markets	11
Pop-Up Park Events & Programs	9
Festivals	9
Gaga Pit	5
Spray Park	2



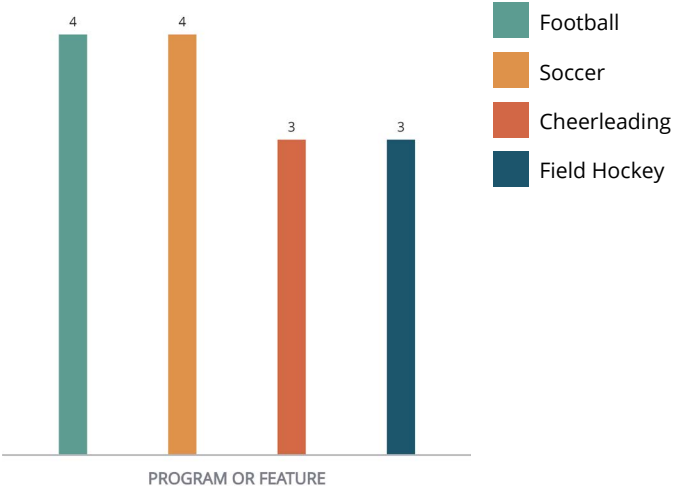


# Listening Session #2 (Youth)

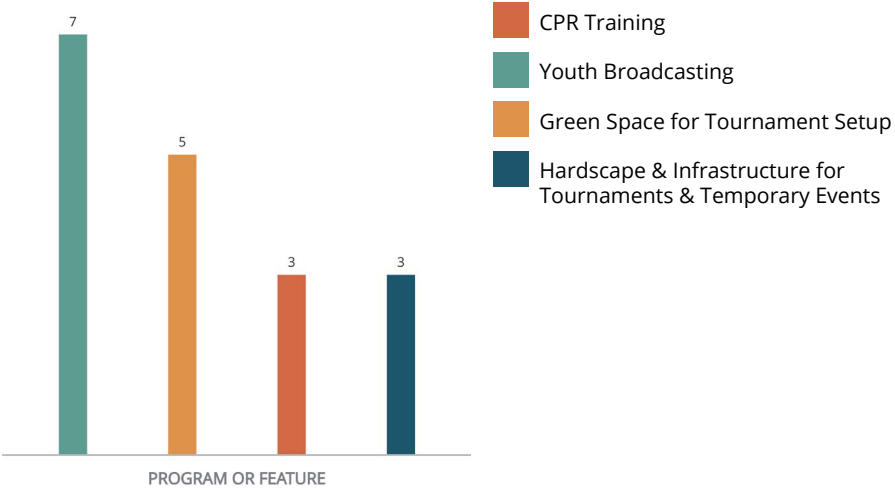
A youth listening session was held at the UPMC Rooney Sports Complex, the Steelers training facility in the Southside. It was held on Saturday, March 9th, from 10:00 AM to 12:00 PM. Since the session was held outside the Hazelwood neighborhood, a shuttle service was provided for children and their parents to attend. The kids got a tour of the facility, including seeing Pittsburgh's six Lombardi trophies and meeting Steeley McBeam! The session ended with the kids playing games and throwing football on the indoor practice field.



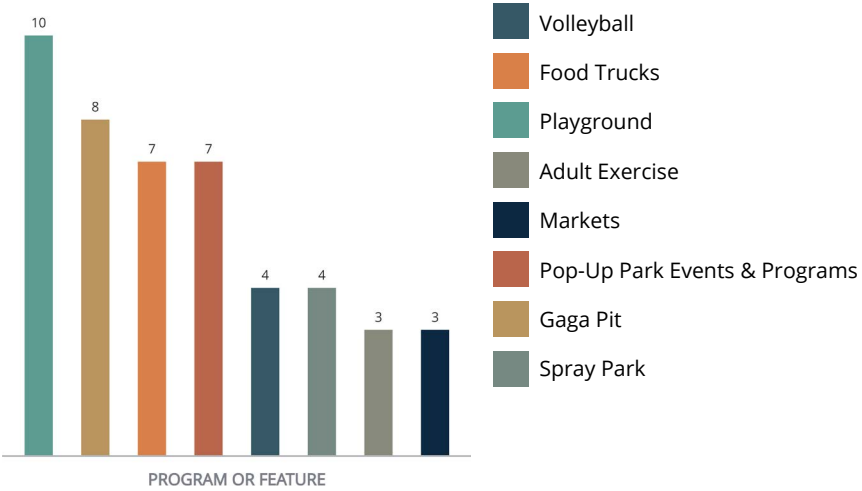
## MULTI-SPORT TURF FIELD



## ADJACENT OPEN SPACE



## PARK SPACE





The third listening session was held at the Spartan Community Center of Hazelwood on Saturday, March 9th, from 2:00 to 3:30 PM.



A bar chart with four bars representing different sports. The x-axis is labeled 'PROGRAM OR FEATURE'. The y-axis represents the count. The bars are colored teal for Football, orange for Soccer, red-orange for Field Hockey, and dark blue for Lacrosse. Each bar has its value (2 or 1) printed above it.

Program or Feature	Count
Football	2
Soccer	2
Field Hockey	1
Lacrosse	1



A bar chart with three bars of equal height, each labeled with the number '1' at the top. The bars are colored teal, orange, and red from left to right. A legend on the right side of the chart identifies the categories: 'CPR Training' (teal), 'Strength & Agility Training' (orange), and 'Hardscape & Infrastructure for Tournaments & Temporary Events' (red). The x-axis is labeled 'PROGRAM OR FEATURE'.

Program or Feature	Count
CPR Training	1
Strength & Agility Training	1
Hardscape & Infrastructure for Tournaments & Temporary Events	1



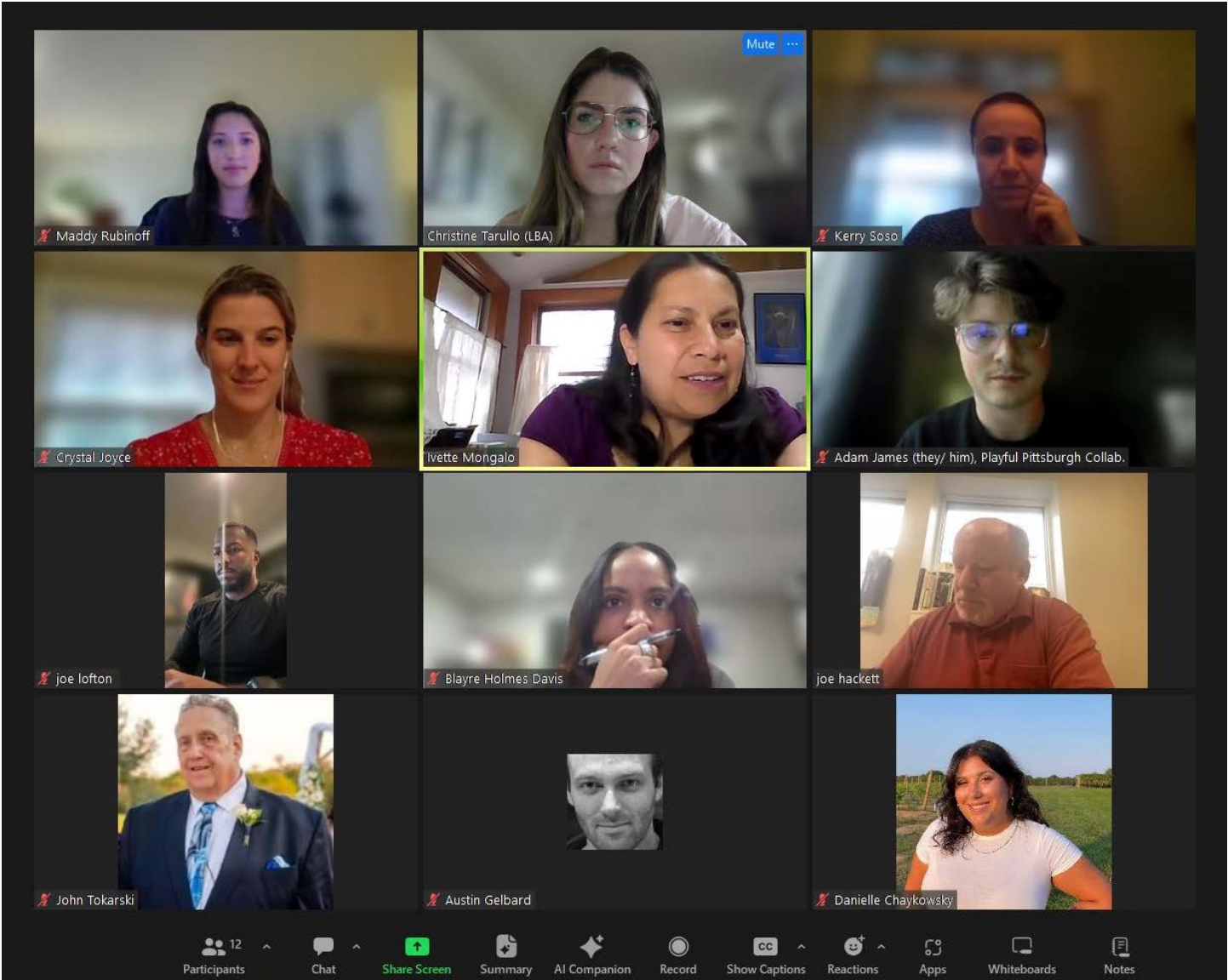
Program or Feature	Count
Adult Exercise	6
Food Trucks	5
Playground	3
Markets	2
Farmers Markets	2
Pop-Up Park Events & Programs	1
Spray Park	1





# Listening Session #4 (Virtual)

A virtual listening session was held for those who could not attend the in-person meetings. It was held on Thursday, March 14th, from 6:00 to 7:30 PM. The same components from the in-person listening sessions were implemented virtually, using Jamboards that allowed people to drag and drop Post-It notes with their ideas on the boards.





The final listening session was a workshop held at the after-school program for the Hazelwood Cobras at Burgwin Park on Friday, March 15th, from 5:00 to 6:30 PM.



Program or Feature	Count
Football	20
Soccer	6
Cheerleading	12
Field Hockey	7
Lacrosse	2

Program or Feature	Count
CPR Training	15
Strength & Agility Training	4
Wellness Programs	2
First Aid Training	2
Youth Broadcasting	1
Green Space for Tournament Setup	1
Hardscape & Infrastructure for Tournaments & Temporary Events	1

Program or Feature	Number of Requests
Volleyball	30
Food Trucks	16
Playground	10
Adult Exercise	9
Markets	6
Farmers Markets	6
Pop-Up Park Events & Programs	3
Festivals	3
Gaga Pit	2
Spray Park	1





# Common Topics

## Organizing What We Heard

There was a great deal of discussion about the potential at each of the listening sessions, and a great deal of information was gathered by Tishman Speyer, the Steelers, and the design team. To summarize what we heard, topics were organized into two areas:

- ▶ Programs

*Sports, activities, events, or gatherings, both planned and unplanned*
- ▶ Features

*Physical, built elements or amenities to support sports, recreation or user comfort*

The property has a variety of different spaces or potential locations for programs or features, some of which might be appropriate for an athletic field and some not. Therefore, consideration was given to locating items within a range of locations:

- ▶ Multi-sport turf field

*Within the fence surrounding the synthetic turf football field*
- ▶ Adjacent open space

*Areas between the field, existing garage and parking*
- ▶ Park space

*Parcel 56 and Parcel 68 within the same block as the Field*

The development of the property will be completed in phases.

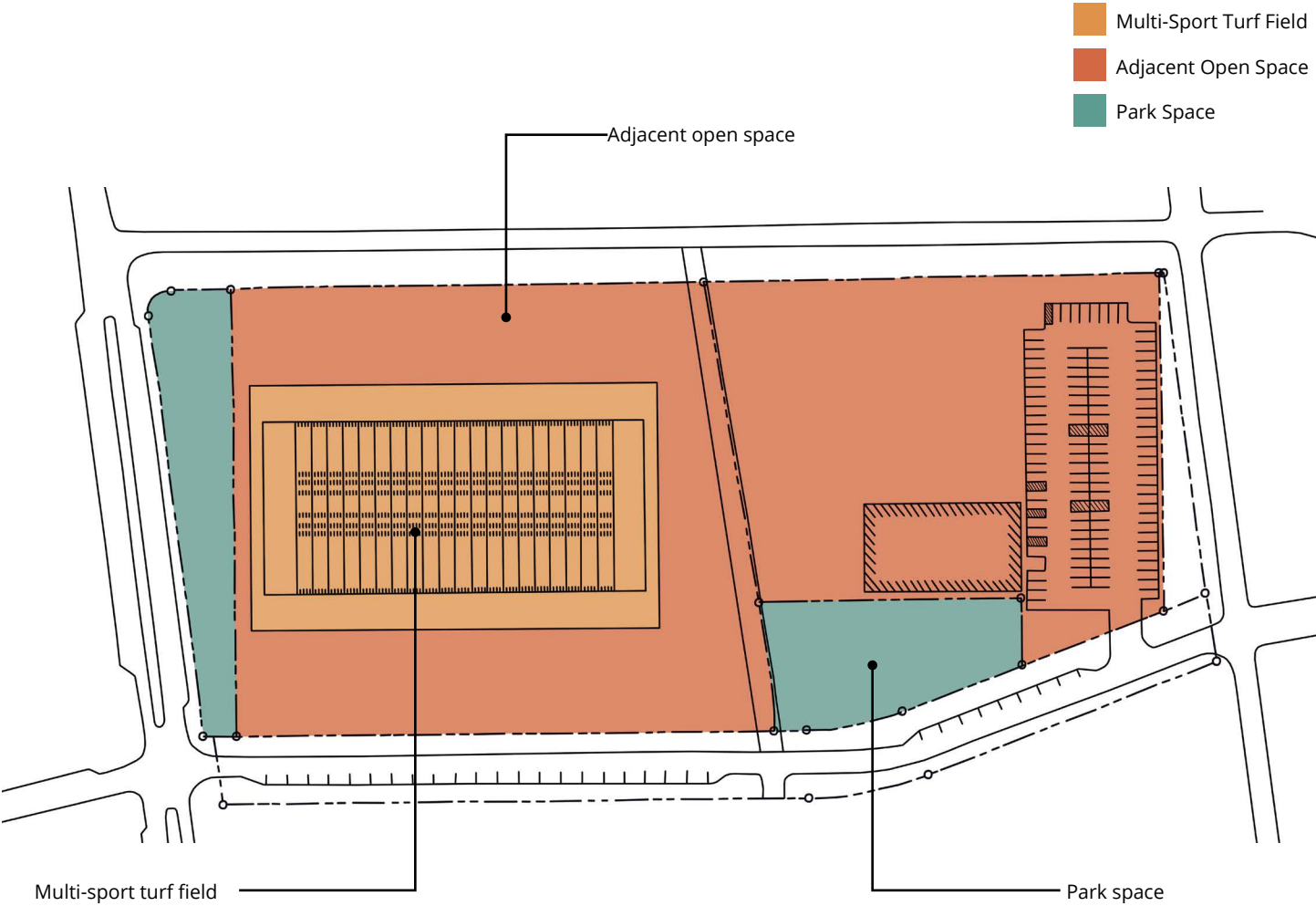
- ▶ Initial phase

*Multi-sport turf field*
- ▶ Later phases

*Adjacent open space and park space*

## Evaluating What We Heard

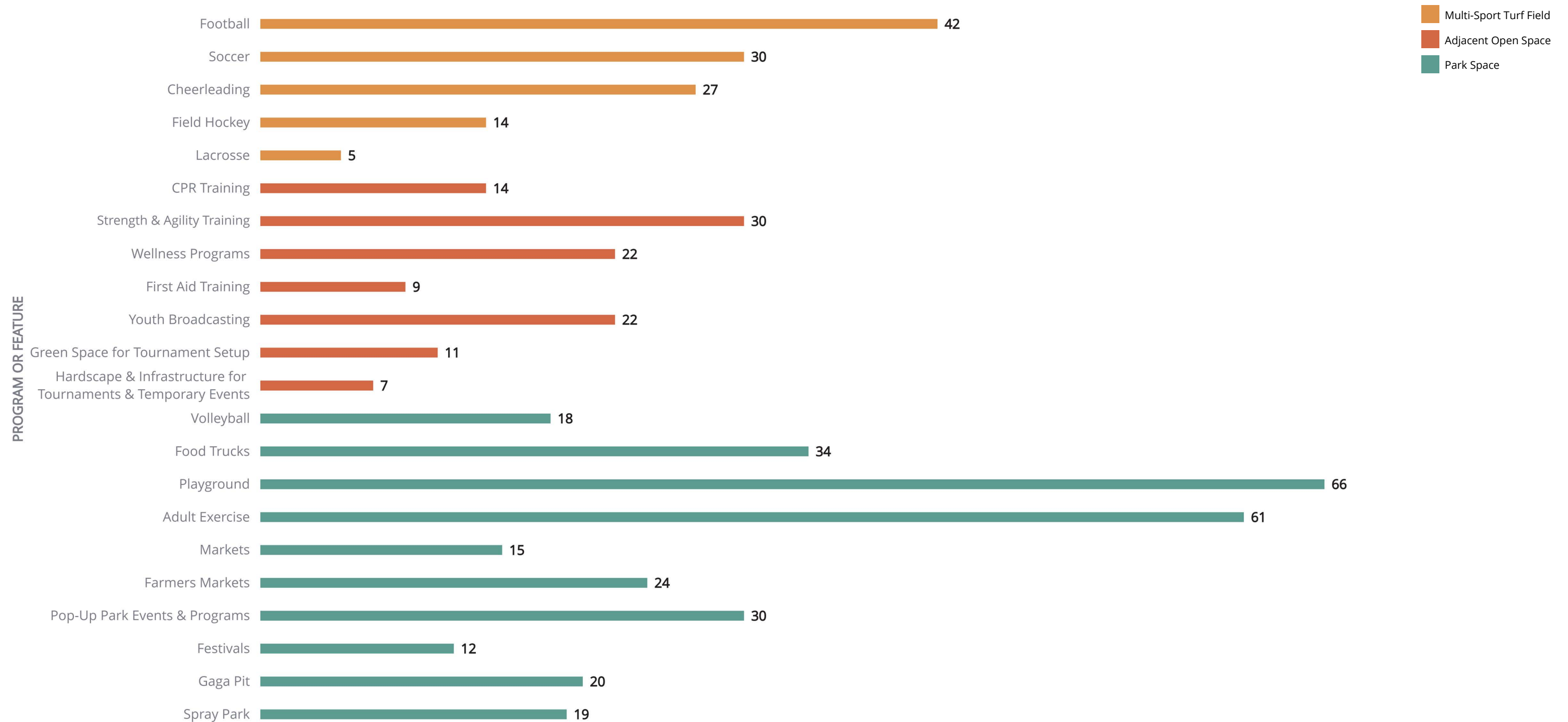
Determining which items are to be included in or around the field is a delicate balance. Information gathered at the listening sessions, while incredibly valuable, was personal and anecdotal and not collected in a statistically defensible way.





# What People Want to See

This bar graph is a summary of positive responses to inspirational precedent images across all listening sessions. The quantity shown in each row represents the total number of positive responses for that particular program or feature. The responses from each individual listening session are shown in the Appendix.

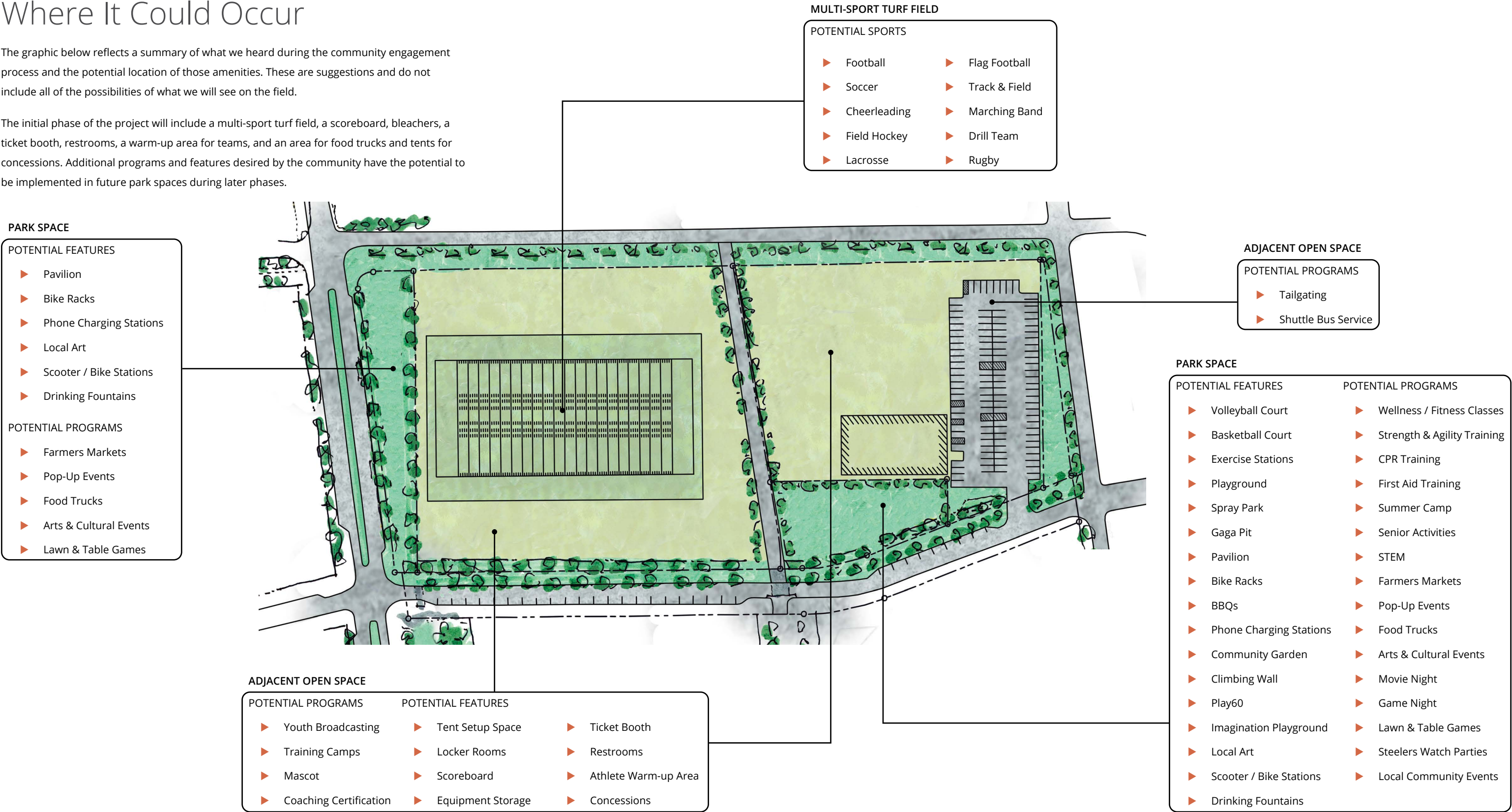




# What People Want to See & Where It Could Occur

The graphic below reflects a summary of what we heard during the community engagement process and the potential location of those amenities. These are suggestions and do not include all of the possibilities of what we will see on the field.

The initial phase of the project will include a multi-sport turf field, a scoreboard, bleachers, a ticket booth, restrooms, a warm-up area for teams, and an area for food trucks and tents for concessions. Additional programs and features desired by the community have the potential to be implemented in future park spaces during later phases.





# Next Steps

The process of designing and building a world-class multi-sport facility involves many steps and a great deal of time. The following graphic depicts the steps, known dates or events and the approximate timeline for completion. The goal is to update the community as design and construction progresses on the field. Exact dates are subject to change.

## Project Timeline







Prepared by:

LBA Landscape Architecture  
95 South Tenth Street, Pittsburgh, PA 15203  
lba-la.com 412.488.8822

April 2024